



αCOOL

ALPHACOOOL – THE COOLING COMPANY

Discover Alphacool a pioneer brand in watercooling

Enjoy high performance solutions for comprehensive cooling concepts

Get to know our All in One and our All in One^{connected} cooling solutions

Benefit from our years of experiences

Find a long term business partner in Alphacool



Content

Eis-Series

GERMAN ENGINEERING

Benefits of Liquid Cooling Systems
Our expertise
OEM All in One (Modularity System)
Our industrial- / OEM customers

Page 2
Page 3
Page 4-5
Page 6-7

Eisbaer	All in One CPU	Page 8-9
Eiswolf GPX Pro	All in One GPU	Page 10-13
Eisbrecher	Radiator	Page 14-15
Eiswand	External AiO CPU	Page 16-19
Eiszeit 2000	Chiller	Page 20-21
Eisblock	CPU cooler	Page 22-23
Eispumpe	Pump	Page 24-25
Eisdecke	Pump Top	Page 26-27
Eisbecher	Tube reservoir	Page 28-29
Eisfach	5 1/4" reservoir	Page 30-31
Eisstation	Reservoir	Page 32-33
Eiswasser	Fluid	Page 34-35
Eiszapfen	Fittings	Page 36-37
Eisrohr	Hardtubes	Page 38-39
Eisfluegel	Flow indicator	Page 40-41
Eisschicht	Thermal pad	Page 42-43
Eiskoffer Prof.	Bending	Page 44-45
Eisplateau	Anti-Static mat	Page 46-47
Eisteppich	Mousepad	Page 48-49
Eislicht	LED Panel	Page 50-51
Eiskamm	Cablemanagement	Page 52-53

Releases 2017 / 2018 - Aurora Series

Page 54-57



Benefits of Using Liquid Cooling Systems

High Cooling Capacity

Reduce thermal resistance by a factor of 10 or more

High Heat Flux Density

Remove up to five times as much heat per square area as conventional air cooling systems
Advantageous in densely packed electronics with limited space

Heat Routing

Allows the integration of small heat exchangers to route heat away through a liquid circle
Avoids pushing air all around the system

Rapid Cool Down

Larger cooling capacities than conventional air cooling methods
Reduces time needed to reach required temperature

Low Noise

Nearly free of vibration
Possibility of small powerful systems



Our Expertise



- Strong Engineering Services and Manufacturing in an ISO 9001 and ISO 14001 certified facility
- Global Presence for supporting onsite concept generation
- Thermal Modeling
- Flow Analysis
- Mechanical Design
- Electrical Design
- Rapid Prototyping



- In-house test capabilities to support:

- Noise measurement
- Cooling capacity
- Pressure and flowrates
- Electronic drive circuit testing
- Reliability testing
- High temp oven storage testing
- Temperature cycling
- Continuous operation testing



Make It Yours.



We work together with different premium suppliers with a proven history of supplying high reliable components. Benefit from our knowledge, innovation and resources. We are now able to produce 3.000-5.000 pcs. All in One water cooling kits per month.

Contact us today for your complete application solutions.

Your OEM Business Partner



Individually

Perfect coordination for your brand and customers

individual solutions for different applications and process conditions
high compatibility in its own and other Brands

Compatible

Range extension and perfect integration in your product range

constant expansion of the product range
compatibility with other products

Innovative

Latest cooling and design techniques for future products

high-quality components for best performance
optimal processing technology for a long lifetime
perfect design for simple integration into existing systems

Simple

Easy cooperation for complex tasks

trained and incorporated team
optimal solving approaches for individual challenges

Future-oriented

New impulse for your competitive opportunities

high performance for optimal results
continuous further development of components
introduction of new technologies in the development process

Personally

Contact person for high quality support

from the first meeting to elaborate cooling concepts
always a competent partner
optimal consulting expertise

Our Industrial- / OEM Customers



Datacenter cooling



- special and complete solutions
- special designs
- constant cooling

Medical/Laboratory Equipment



- compact and strong cooling systems
- precisely adapted options
- hygienic and safety cooling standard

System Builder / OEM



- OEM manufacturer
- customized prepared integration sets
- extensive support

Mechanical Engineering



- special designs for accumulators or batteries
- specifically adapted concepts for solar systems
- wide range of cooling parts

Film and Video productions



- low noise emission
- compact systems for workstations
- various solutions for CPUs and GPUs

Laser technology



- extensive cooling solutions
- specific solutions that fits into the overall system
- single solutions or mass production



Eisbaer All in One CPU

 GERMAN ENGINEERING



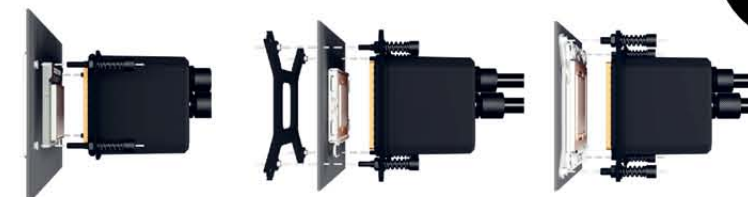
Scan me!



Expandable

Open loop

100% copper



AMD 607/771/G34/939
AM2/AM2+/AM3/AM3+/
FM1/FM2

Intel 775/1366/1156/
1155/1150/1151

Intel 2011/2011-3



All in One CPU cooler with pump and reservoir

- Cooler, pump and reservoir are one unit
- Compatible with different sockets
- High cooling performance through the cooling fins on the bottom plate
- Fillport at the upper side
- Easy to fill and upgrade
- Available as Eisbaer (AiO) and Eisbaer (Solo)

Eiswolf GPX Pro All in One

 GERMAN ENGINEERING



Scan me!



Custom colour

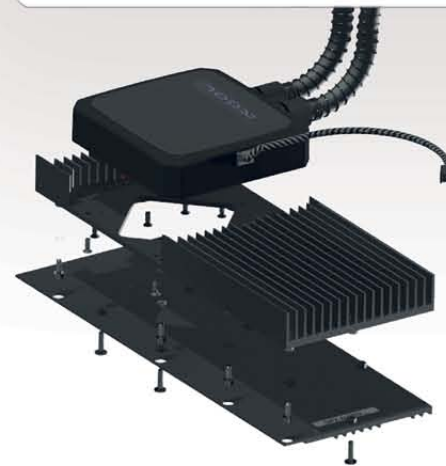
HBM-ready

High quality finish

10

All in One GPU cooler with pump and reservoir

- HBM Ready
- Cooler, pump and reservoir are one unit
- Easy extendable open loop system
- Also available without radiator
- Comes with 2 quick release coupling kits
- The modular design allows lots of combinations
- Easy and fast installation



Find your matching cooler:



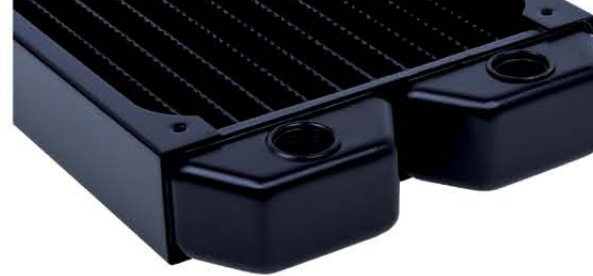
Scan me!

11



Quick release coupling

- Tubes are wrapped in kink protection springs
- Quick and simple to expand the circulation through nylon safety quick-closure
- High flexibility



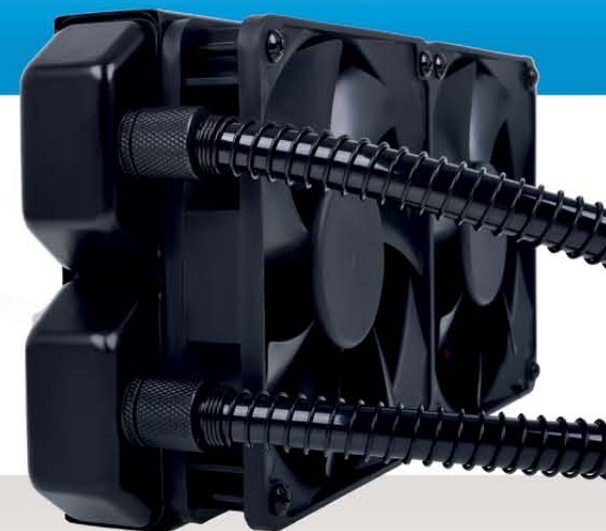
Fans:
 Eiswind PWM
 120 x 120 x 25mm
 500 - 1700 rpm
 98,54 m³/h
 23,0 db(A)

Eisbaer + Eiswolf GPX Pro

 GERMAN ENGINEERING



12



Radiator

- Alphacool NexXoS radiators
- Available in four sizes
- Internal material: mostly copper
- Casing material: steel side panels, brass threads, copper chambers
- Colour: black
- 2 x G1/4" screw threads
- M3 screw thread size
- Pressure tested up to 1.5 bar



13

Eisbrecher Radiator

 GERMAN ENGINEERING



Scan me!


ALPHACOOL - THE COOLING COMPANY



High performance

Robust casing

Removable parts

Radiator with case

- NexXxos XT45 radiator
- Available in 3 different sizes
- Lamellar and cooling channels made of full copper (soldered by hand)
- Case made of aluminum and steel components includes:
 - Synthetic filter foam
 - Fan grills (steel)
 - 4x G1/4 screw threads for in- / outlet
- Illuminated Alphacool logo on the side panel



1 x 120



2 x 120



3 x 120



Eiswand External AiO CPU

 GERMAN ENGINEERING



oCOOL
ALPHACOOL - THE COOLING EXPERT



Easy connecting

Redundant pumps

No installation

16

External cooling tower with CPU cooler

- Full cooling system
- Illuminated reservoir
- Easy water level overview
- Aluminum Alphacool logo on the top
- Easy to fill
- Simple design



fill port

- Upper cover with window and fillport
- Mounting frame
- Detachable reservoir top
- Reservoir with connection to radiator part



17



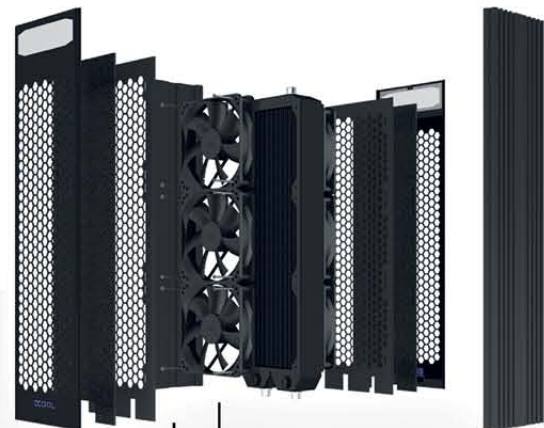
Radiator segment

- Illuminated Alphacool logo in the front
- Alphacool XT45 radiator and 6 Eiswind fans
- Redundant system

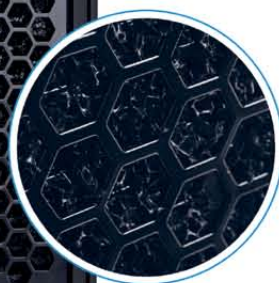


Pump segment

- Illuminated base
- Easy connecting with quick release couplings
- 2x DC-LT 2400 low noise ceramic



- Radiator
- Fans
- Side panels
- Fan grills
- Synthetic filter foam
- Front panels



- Connection to radiator part
- Top with electronics + in- / outlet
- 2x pumps
- Illuminated base with feet



Eiszeit 2000 Chiller

 GERMAN ENGINEERING



Scan me!



CCOOL
ALPHACOOL - THE COOLING COMPANY

Ultra high performance

Powerful pressure

For long term use



Chiller

- Simple matte black design with the Alphacool logo
- Perfect anti-friction and slip-proof properties
- Special thin foam for comfortable support

Eisblock CPU Cooler

 GERMAN ENGINEERING



Scan me!



ALPHACOOL - THE COOLING COMPANY

Awesome design

Easy mounting

Best performance



CPU cooler



- Patented water flow
- Available in different brilliant colours
- Compatible to all watercooling systems with G1/4" connections
Also to Eisbaer and Eiswolf AiO
- Established installation
- Easy changeable cover
- Lit Alphacool logo
- Compatible to Intel and AMD processors



Also available: Modding Kits in different colours



Montagebeispiel
(Example of installation)

Eispumpe Pump

 GERMAN ENGINEERING



Ceramic axis

High power

PWM signal



Pump

- Regulated by switches or PWM
- Selected power level is PWM max
- DC pump is equipped with an electronically commutated ceramic axis
- Increase of bearing play is impossible due to the design
- Runs quietly and smoothly over its whole lifespan
- MTBF 50.000 hours

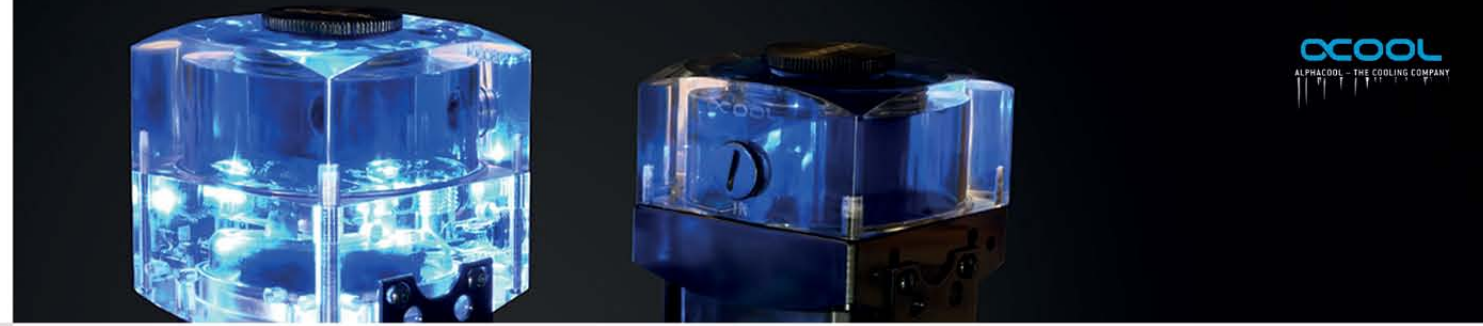


Eisdecke Pump top

 GERMAN ENGINEERING



Scan me!



αCOOL
ALPHACOOL - THE COOLING COMPANY

max
GOLD AWARD



Compact design

Easy mounting

Versatile use



Eisdecke for Laing D5 (VPP655/TPP644/MCP655/VPP755)



80 x 80 x 40mm
5x 1/4" Threads

Eisdecke for Laing DDC



80 x 80 x 23mm
5x 1/4" Threads

Pump Cover

- Top in plexi and acetal
- Three inlets and two outlets
- Plexi version with four holes for 5mm LED's
- New holder
- Installation in 3.5" drive is possible
- Compatible with Eisdecke reservoir
- Suitable for Eispumpe, Laing D5 or VPP655 and Laing DDC
- Includes two stands

Eisbecher Tube reservoir

 GERMAN ENGINEERING



Scan me!



CCOOL
SOLUTIONS FOR THE COOLING INDUSTRY



„Lighttower“ effect

Full plexi and acetal

All in One solution



- **Bubble down**
Prevents turbulence that could let air into the water circulation

- **Lighttower - effect**
Visual experience within every watercooling system



- **Lighting modules**
Personalised lighting effects with plexi modules for 5 mm LED
Installation in all G1/4" screw threads holes possible



- Full plexi and acetal versions available in 250mm and 150mm

Eisfach Reservoir dual 5,25"

 GERMAN ENGINEERING



Scan me!



ALPHACOOL



Soft touch finish

5.25" slot

Scratchproof



Reservoir

- Compatible with Eispumpe, Laing DDC, Laing D5 (VPP655, VPP755) and DC-LT
- Black-matt painted scratch-secure soft-touch surface
- With two holes for 5mm LED's
- Mounted in two front 5,25" bays
- Lit Alphacool logo in the front
- Easy filling at the front
- Decoupled

Eisstation Reservoir

 GERMAN ENGINEERING



Comfortable feel

4 different sizes

Slip proof



ALPHACOOL
ALPHACOOL - THE COOLING COMPANY

Reservoir

- Compatible with Alphacool VPP 755, VPP 655 & D5 pumps
- Soft touch body with mounting holes
- Two filports on top side with G1/4" thread
- Made of three different materials
- Coming soon for DDC and DC-LT pumps



Cable management



Mounting holes



Usable with plexi modules for 5mm LED



Eiswasser Fluid



Brilliant colours

ROHS complaint

Very clean

Fluid

- Available in amazing different colours
- Designed and produced in Germany
- Directly from a high-grade reverse osmosis system
- Cleaned with 5 special filters
- No salts, metals and contaminants which are in tap water
- Virtually completely electrically non-conductive and absolutely contaminant-free ($< 0,1 \mu\text{S}/\text{cm}$, approx 100 times less than in standard distilled water)
- Bacteria and algae contamination is greatly suppressed

Eiszapfen Fittings

 GERMAN ENGINEERING



Scan me!



OCOOOL
ALPHACOOL - THE COOLING COMPANY

High quality finish

Large selection

2 Colours

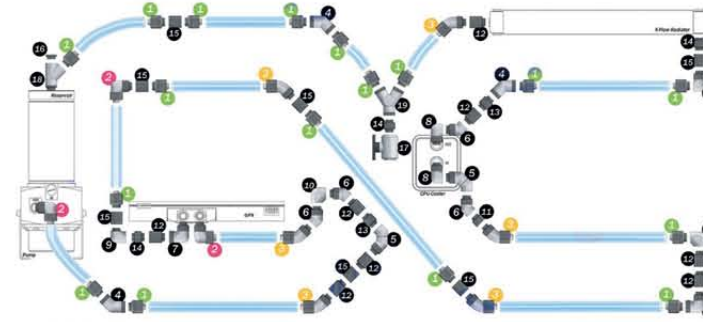


Fittings

Fittingmap



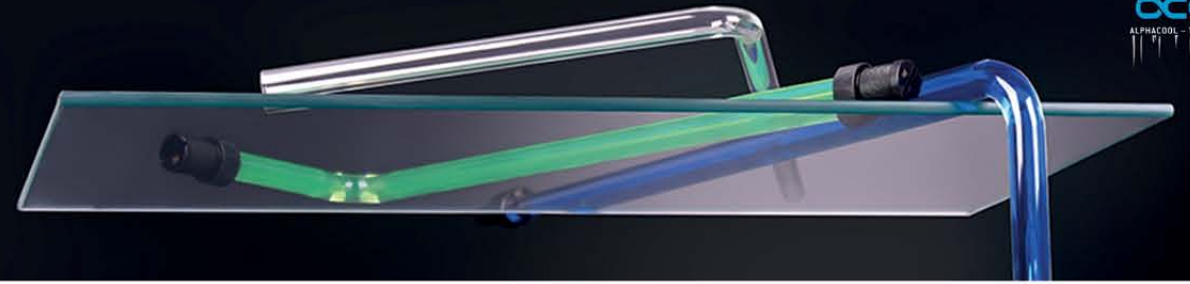
- Different models
- Chrome and deep black finished brass
- Suitable for very different applications
- High flow rate through optimal design
- O-rings in different colours included



...and many more



Scan me!



Plexi and PETG

Easy bending

4 bar pressure



HardTubes

- Break-proof
- Two lengths and diameters
- Available in clear and satin
- Low temperature for bending
- Flexible and easy handling

16/13 Plexi Satin



13/10 Plexi Satin



16/13 PETG / Plexi



13/10 PETG / Plexi



Eisfluegel Flow indicator



Scan me!



Silent

Eyecatching

Perfect flow view

Flow indicator

- Fan with six blades made of plexiglass
- 3 x 1/4" screw threads
- Case combination of acetal and plexiglass
- Silent revolution of fan wheel
- Extra eye-catching
- Dimensions: 44,5 x 32,1 x 48,4mm



- Blades in different colours:



Eisschicht Thermal pad

 GERMAN ENGINEERING



Scan me!



oCOOL
ALPHACOOL - THE COOLING COMPANY

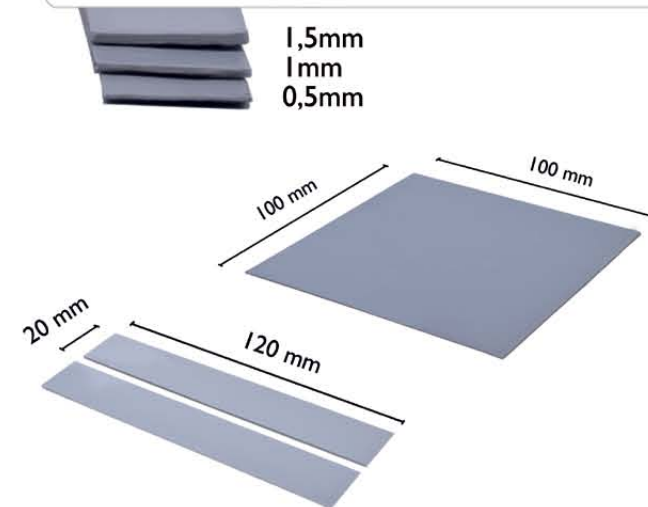
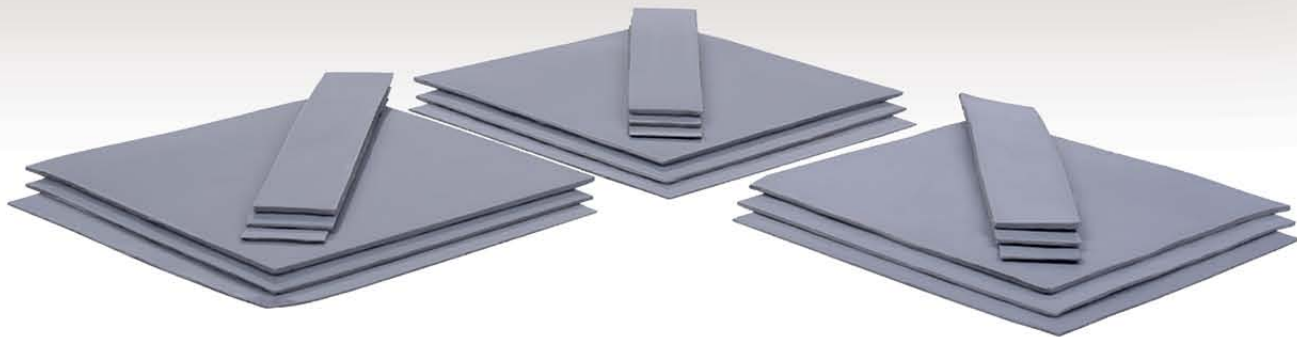
Like a layer of ice

11, 14 und 17W/mk

Individual sizes

Thermal pads

- Freezes like a layer of ice
- Self-adhesive, elastic, adaptable and more
- Usable with all types of coolers
- Available in different sizes, thicknesses and power levels



art. no.	model
12451	11W/mK 100x100x0,5mm
12453	11W/mK 100x100x1,5mm
12452	11W/mK 100x100x1mm
12458	14W/mK 100x100x0,5mm
12460	14W/mK 100x100x1,5mm
12459	14W/mK 100x100x1mm
12464	17W/mK 100x100x0,5mm
12467	17W/mK 100x100x1,5mm
12465	17W/mK 100x100x1mm
12454	11W/mK 120x20x0,5mm
12457	11W/mK 120x20x1,5mm
12456	11W/mK 120x20x1mm
12461	14W/mK 120x20x0,5mm
12463	14W/mK 120x20x1,5mm
12462	14W/mK 120x20x1mm
12468	17W/mK 120x20x0,5mm
12470	17W/mK 120x20x1,5mm
12469	17W/mK 120x20x1mm

Eiskoffer Professional Bending

 GERMAN ENGINEERING



oCOOL
ALPHACORE - THE CABLES COMPANY



Aluminum reinforced

Great tooling selection

Slip proof

44



Bending Suitcase

- 22 Toolings for 2D and 3D bending radii
- Aluminum measuring kit with angle Measurement
- Steel plate for easy bending
- Saw from hardened steel
- Mounting gloves
- Silicon bending insert 12 and 10mm



Part of Content

45

Eisplateau Anti-static mat

GERMAN ENGINEERING



Scan me!



Clean workstation

All Important measurements

Workstation and mousepad



Anti-static mat

- Dimensions: 1200 x 600 x 4mm
- Material: rubber, printed textile
- Usable as a mousepad
- Antistatic clips to connect an alligator clip and an anti-static wrist strap

Eisteppich Mousepad

 GERMAN ENGINEERING



Scan me!



oCOOL
ALPHACOOL - THE COOLING COMPANY

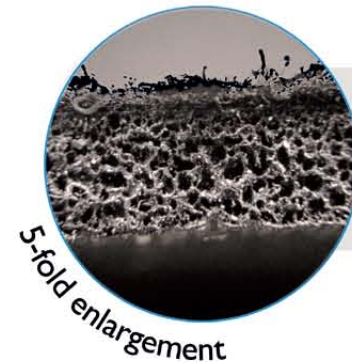
Comfortable feel

4 different sizes

Slip proof

Available in 4 different sizes

S = 250 x 300 x 3mm
M = 350 x 250 x 3mm
L = 440 x 350 x 3mm
Monsta = 900 x 400 x 3mm



- Robust cloth cover

- Special foam layer

- Rubber bottom

5-fold enlargement

Mousepads

- Simple matte black design with the Alphacool logo
- Perfect anti-friction and slip-proof properties
- Special thin foam for comfortable support
- Made of three different materials

Eislicht LED Panel

 GERMAN ENGINEERING



Scan me!



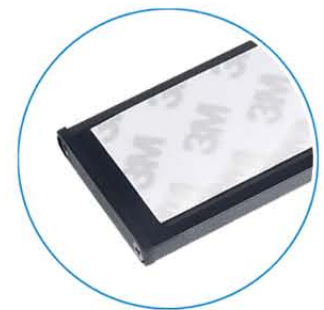
Consistent glow

Long lifespan

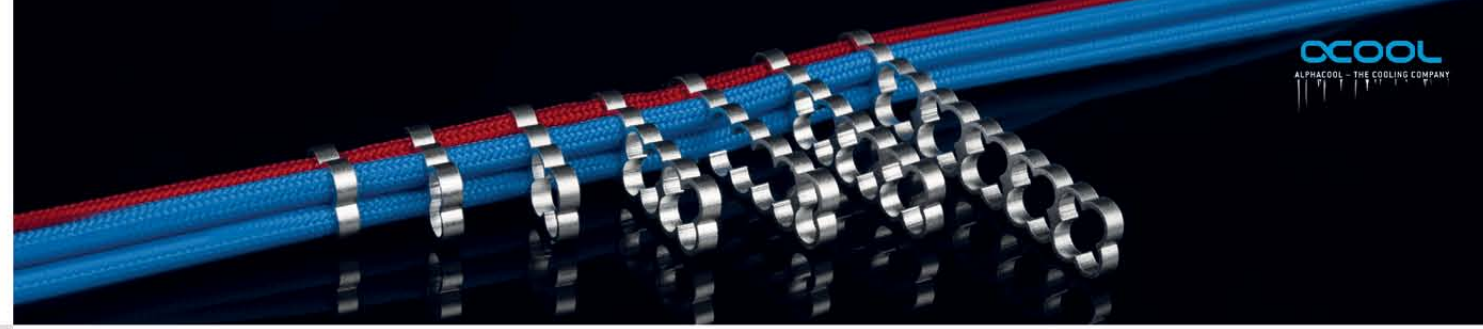
Different mounting options

LED Panels

- Super flat LED light
- High finish Aluminum case
- Easy to mount with magnetic dots
- Available colours: white, blue, red and green
- Power supply with 3Pin
- Dimensions: 312 x 39 x 7mm



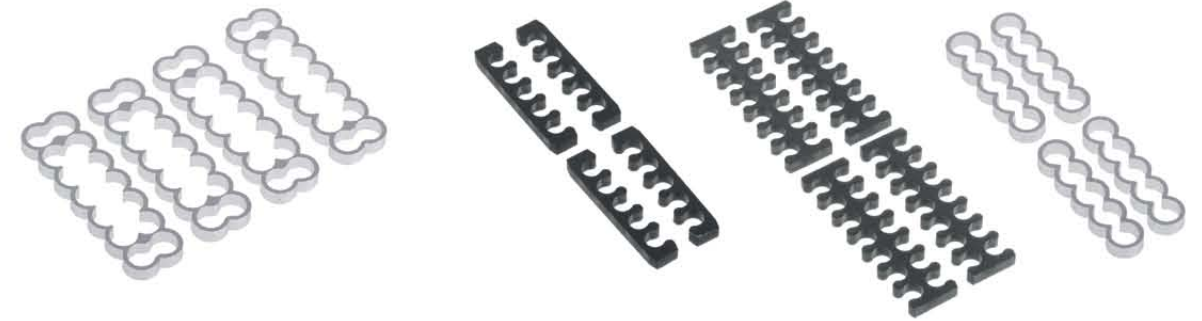
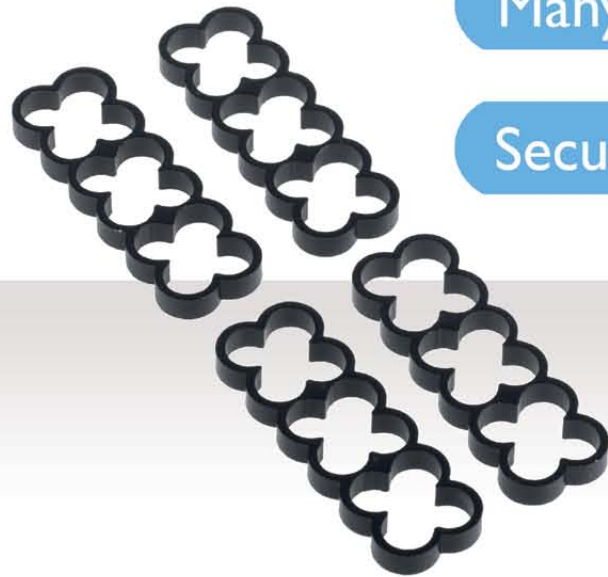
Eiskamm Cablemanagement



High quality finish

Many applications

Secure and firm hold



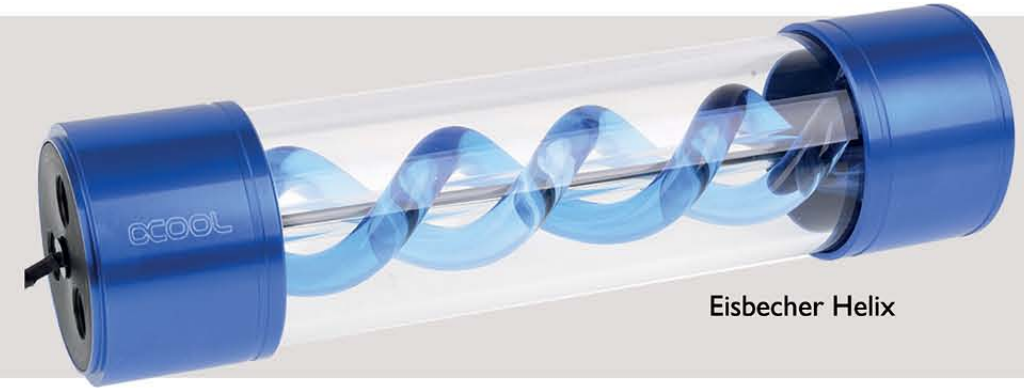
Cablemanagement

- Cable wire clear comb (4 to 28 Slots)
- Suitable for all 16AWG/18AWG UL3239/UL1015/UL1007/3135 wires
- Available in Aluminum and clear plexi
- Available colours: black, blue, red, silver and clear





Eischiller



Eisbecher Helix

...and many more...!

Look forward to **enjoy**
our product releases!

Create your future
with **Alphacool!**



Check out our brand new
Aurora-LED Series



Landingpage



Shop

ACOOL

ALPHACOOOL – THE COOLING COMPANY

Meet and visit us in 2017 at



January 5-8, 2017, Suite 302
Westgate Las Vegas Resort & Casino



Boston, MA Mar 10-12, 2017
Booth: 10044



May 30 - Jun 3, 2017 Computex Taipei

Nangang 4F Booth N0914

Alphacool International GmbH
Marienberger Str. 1
38122 Braunschweig

Head Office:

 +49 0 531 28874 - 0
 +49 0 531 28874 - 22
 info@alphacool.com
 www.alphacool.com

Eis series 2017 / 2018

All rights reserved any unauthorized copying is strictly prohibited
Errors and omissions are excluded