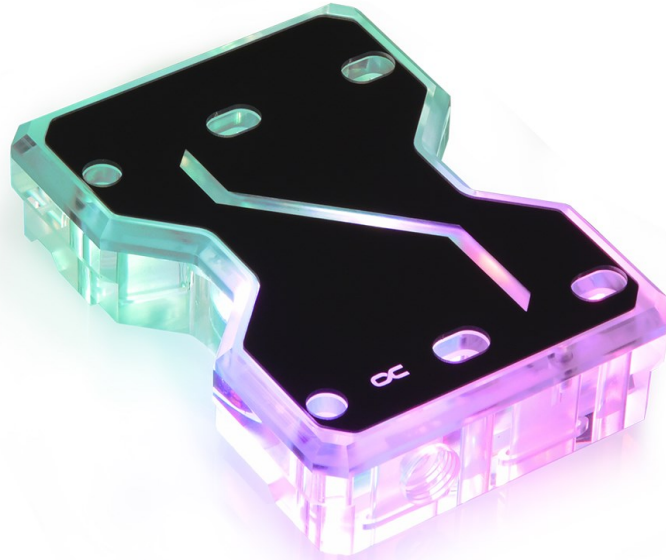




**ALPHACOO – THE COOLING COMPANY**



## Alphacool Aurora GPX SLI Connector Dual X4 - Acryl - Digital RGB

### What is it?

With the Alphacool Aurora GPX SLI Connector Dual, the water circulation of two Alphacool Aurora graphics card coolers can be combined. The Alphacool Aurora GPX SLI Connector Dual replaces the terminals of the graphics card coolers. This means that short hoses or hardtubes with narrow bending radiuses can be avoided. It is made of acryl and is equipped with extensive digitally addressable RGB LED lighting.

### Highlights

- Digital addressable RGB LED lighting
- Replaces the terminal from the graphics card cooler
- Made of crystal clear Acryl

Version: 30.10.2020

We assume no responsibility for any typing errors.

Alphacool International GmbH, Marienberger Strasse 1, 38122 Braunschweig Tel: (+49)0531 288 740 Supportmail: [info@alphacool.com](mailto:info@alphacool.com)

## Scope of delivery

6 pcs. M4x35 Schrauben

4 pcs. O-Ring

1 pcs. Digital RGB Adapter 4-I-Pin 5V

Technical data cooler	
W x T x H	87 x 121 x 30 mm
Net weight	283 g
Max working temperature	60 °C
Material	Acryl
Threads	2 x G1/4" (1 x IN, 1 x OUT)
Connector Digital RGB	3-Pin 5V
Certificates	CE, FC, ROHS

<b>Product pics download</b>	<a href="https://www.alphacool.com/download/1017341_pics.zip">https://www.alphacool.com/download/1017341_pics.zip</a>
------------------------------	---

<b>Manual PDF</b>	<a href="https://www.alphacool.com/download/Aurora_SLI-Connector_manual.pdf">https://www.alphacool.com/download/Aurora_SLI-Connector_manual.pdf</a>
-------------------	---

<b>Other data</b>	
Article number Alphacool	12954
EAN Code	4250197129541
PU Box	1
Dimensions PU B x T x H	20,5 x 13 x 5 cm
Weight	427 g
Customs code	84199085900

## Article text

### What do I need the Alphacool Aurora SLI Connector Dual for?

The Alphacool Aurora SLI Connector Dual is designed for connecting two Alphacool Eislock Aurora graphics card coolers. If you want to connect two GPU coolers in a loop, connecting them via tubing can be problematic due to the tight space. Hard tubes are very difficult to get into the right shape and hoses can bend. Here the Alphacool Aurora SLI Connector Dual offers help. The connection terminals of the graphics card coolers are replaced, and you only have a common inlet and outlet for both cooling blocks.

### What Do I Need to Pay Attention To?

We offer the Alphacool Aurora SLI Connector Dual in two versions. Depending on the installation configuration, either one or two PCIE slots are available between the two graphics cards. For installation configurations in which the graphics cards are installed in the first and third slot, the Alphacool Aurora SLI Connector Dual X3 is required. If the graphics cards are installed in the first and fourth slot, the Alphacool Aurora SLI Connector Dual X4 fits.

### Does It Have Other Features?

The Alphacool Aurora SLI Connector Dual was specially developed for use with Alphacool Eisblock Aurora graphics card coolers. It consists of Acryl and is equipped with addressable digital RGB LEDs. These are very bright and give you the freedom to light up your system according to your mood or your own ideas. The SLI Connector has a pass-through to integrate additional Digital RGB LEDs into the system, allowing you to connect additional Digital RGB LED products without an additional controller. The design follows the Alphacool Aurora design which you can see in many of our other products. The connectors have, as usual, G1/4" thread and are therefore compatible with our other products.

## **How Much Space Do I Need in My Case?**

Since the Alphacool Aurora SLI Connector Dual replaces the connection terminals of our Eisblock Aurora graphics card coolers, the depth of the cooling unit increases only very slightly. This means: If a graphics card with Alphacool Eisblock Aurora cooler fits in your, it should fit with the Alphacool Aurora SLI Connector Dual.

## **How Is the Alphacool Aurora SLI Connector Dual Mounted?**

The installation of the Alphacool Aurora SLI Connector Dual is very easy. The connection terminals of the graphics card coolers are unscrewed, O-rings are inserted into the SLI Connector and then the SLI Connector is screwed to the graphics card coolers.