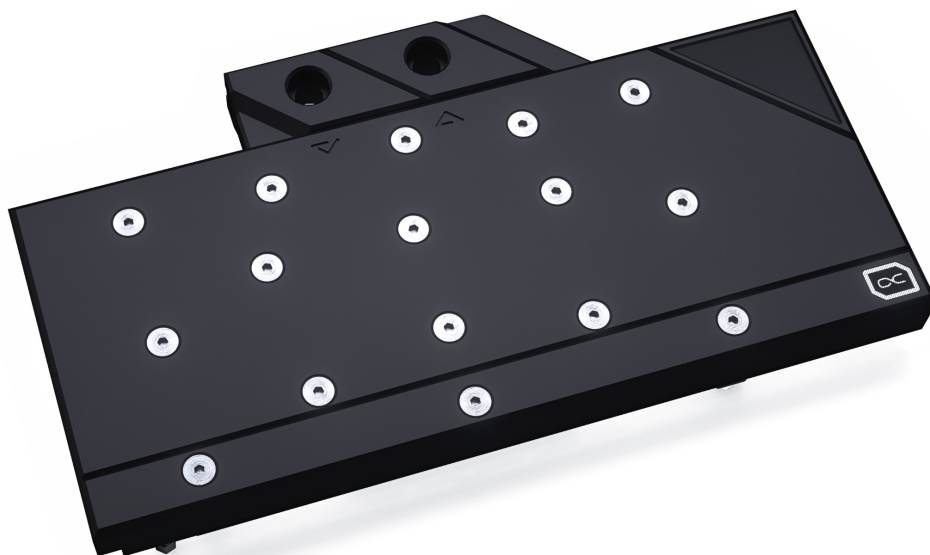


Alphacool article number: 10667

Aquatuning article number: 1020333

The Alphacool Eisblock Aurora Acetal for the RTX 3080 and 3090 in Reference Layout offers an outstanding cooling performance. The fullcover cooler cools not only the GPU but also all important components such as voltage converters and the graphics memory directly with water.

Eisblock Aurora Acetal GPX-N



- Fullcover water block
- Nickel plated copper cooler
- NVLink compatible

Compatibility

Compatibility

To all graphics card with the RTX 3080 and 3090 reference layout

We assume no responsibility for any typing errors.

Alphacool International GmbH, Marienberger Strasse 1, 38122 Braunschweig Tel: (+49)0531 288 740 Supportmail: info@alphacool.com

Scope of delivery

2 x 15x51x1 mm Thermal pad	2 x 30x30x2 mm Thermal pad
1 x 15x38x1 mm Thermal pad	1 x 8x74x3 mm Thermal pad
1 x 15x15x1 mm Thermal pad	1 x 8x84x3 mm Thermal pad
1 x 8x8x1 mm Thermal pad	4 x M2x5 Spring bolts
1 x 8x74x1 mm Thermal pad	4 x M2x5 washers
1 x 8x84x1 mm Thermal pad	4 x M2x11 screws
2 x 15x51x2 mm Thermal pad	2 x Stop plug
1 x 15x38x2 mm Thermal pad	1 x Thermal grease
1 x 15x15x2 mm Thermal pad	
1 x Plug Tool	

Data cooler

L x W x H	224,9 x 121,4 x 25,5 mm
Material cooler	Nickle-plated copper
Material cooler top	Acetal
Threads	4 x G1/4"
Thickness cooling fins	0,6 mm

Data backplate

L x W x H	224,9 x 121,4 x 3 mm
Material	Aluminium
Color	Black

Download Links

Product pics	https://www.alphacool.com/download/1020333_Eisblock_Aurora_Acetal_3080-3090_pics.zip
Manual	https://www.alphacool.com/download/1020466_Eisblock_Aurora_Acetal_Gpx_N_3080_Manual.pdf

Packaging dimensions 1 unit

L x W x H	35,2 x 17,2 x 4,3 cm
Total weight	1,198 kg

Other data

Certification	CE, FC, RoHS
EAN	4250197119306
Customs number	84195080900

We assume no responsibility for any typing errors.

Article text

The Alphacool Aurora Plexi GPX-N RTX 3080/3090 Eisblock combines style with performance and extensive digital RGB lighting. With experience of over 16 years, Alphacool the ability to create GPU blocks that represent high quality and fantastic performance. This perfectly describes the Aurora Plexi GPX Eisblock

More Performance!

During the development of the Eisblock Aurora GPX-N RTX 3080/3090 graphic card GPU block, we wanted to further increase the performance. The first step was to move the cooler closer to the individual components by reducing the thermal pads to a thickness of 1 mm. Next, we reduced the thickness of the nickel-plated copper block. Instead of 7 mm, it is now only 5.5 mm thick. The water flow inside the cooler has also been optimized. All important components such as the voltage transformers and the memory are now significantly better and more effectively cooled by the water. All this ensures a significant increase in cooling performance.

Copper or Aluminium?

Of course, Alphacool only uses copper for its water coolers. With the Aurora GPX-N RTX 3080/3090 Eisblock, the copper is nickel-plated. Compared to its predecessor models, Alphacool has improved the nickel plating even further, which has considerably increased the acid resistance. This means that the nickel should resist flaking. Why does Alphacool rely on copper instead of aluminium? Simply, copper has almost twice the thermal conductivity of aluminium and is therefore clearly the better material for water cooling.

Is There Anything Else New?

The Eisblock Aurora GPX-N RTX 3080/3090 also relies on the new patented stop fittings, which sit flush with the surface of the terminal. On the front of the terminal you can see the corresponding names of the compatible graphic card types. IN and OUT are now marked by small triangles. They are easily recognizable and fit perfectly into the entire aesthetics of the graphic card water cooler.

The Alphacool Aurora GPX-N RTX 3080/3090 Plexi is a complete redevelopment of the previous Alphacool graphics card water coolers. No technical compromises were made, but the entire technical know-how flowed into the development and implementation.