

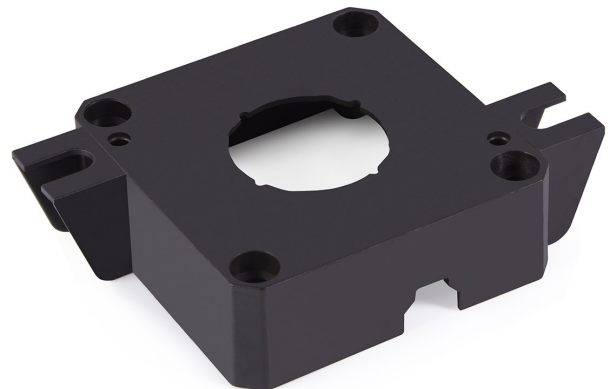
DDC310 Pumpe



The variant shown here uses a standard motor housing. Alphacool offers this pump with different motor housings.



Example of a metal pump motor housing. This motor housing provides additional cooling for the pump and reduces the natural vibration of the pump. This reduces the noise level of the DDC310 pump.



A standard motor housing for the DDC310 pump including screw connection options for the pump such as a special pump bracket.

Pump data without motor housing

L x W x H	61 x 60 x 21 mm
Weight	150g

Technical data pump

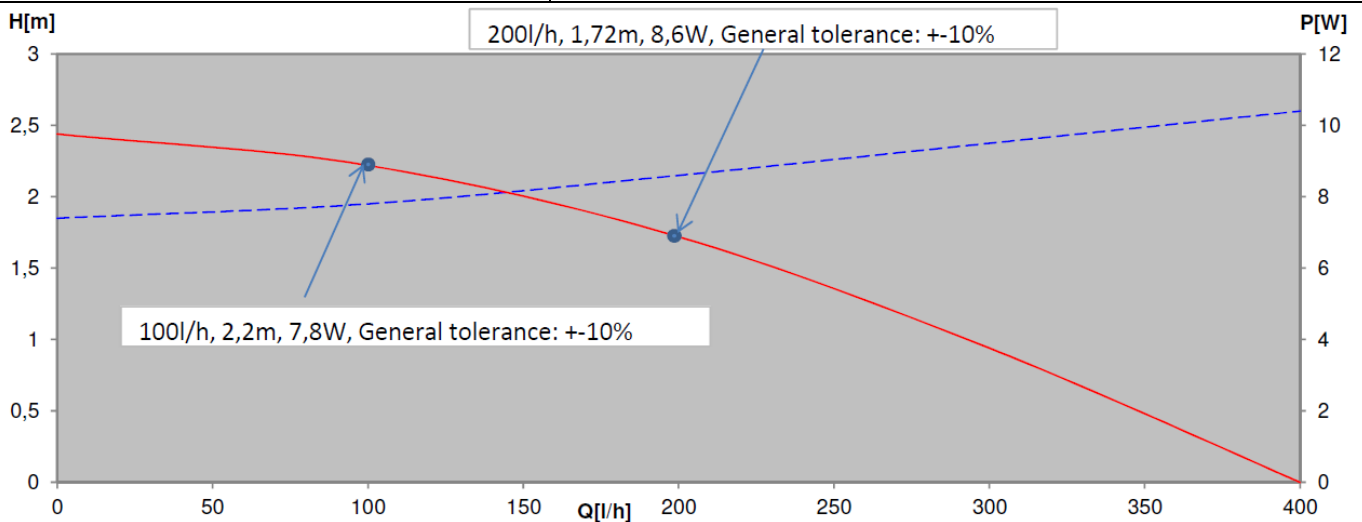
Speed	3250 U/min
Max power consumption	10,4 W
Voltage	12V DC
Power connector	4-Pin Molex
Speed readout	3-Pin Molex
Max. working temperature ambiente	10°C - 50°C
Max. working temperature water	10°C - 60°C
Max storage temperature	-20°C - 50°C
Protection	IP00

Materials

Rotor	Stainless steel
Spherical mounting	Stainless steel
Balance weights	Stainless steel
bearing shell	Carbon (FH821Z2)
Bearing ball	Ceramics (Al ₂ O ₃ 99,5%)
Rotor arm	Luranyl KR 2403 GW T4 (PPE+PS)
Impeller	Luranyl KR 2403 GW T4 (PPE+PS)
Separating calotte	Fortron 1140L4 (PPS)
Pump housing	Fortron 1140L4 (PPS)
All o-rings	EPDM70

Performance data

Max. head of pump	2,44 m
Max. hydraulic performance (QxH=max)	9,6W (200l/hx 1,72m)
Max. theoretical flow rate	400l/h



We assume no responsibility for any typing errors.